

Canon

Delighting You Always



imagePRESS

1110/1135

PRODUCT OUTLINE



Business **Can** be simple

Core system black-and-white printers have just evolved to a new level.

With a high speed output of up to 135 sheets a minute, robustness capable of withstanding large or complex tasks, reliability and security levels ideal for dealing with confidential documents, Canon proudly presents a new generation of core system black-and-white printers. Various functions required of a core system printer have evolved further to help smoothly optimise the production of business forms in your company.





imagePRESS 1110



imagePRESS 1135

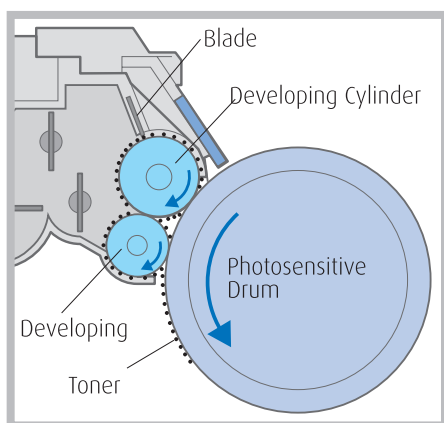
HIGH QUALITY...

■ TRUE 1200 X 1200DPI HIGH RESOLUTION PRINTING

The Canon imagePRESS 1135/1110 digital presses print images at a true 1200 × 1200dpi (with 256 halftones) resolution. It produces higher quality characters, smooth corners, clean gradient transitions, and text will look sharper and images are extremely clear and detailed.

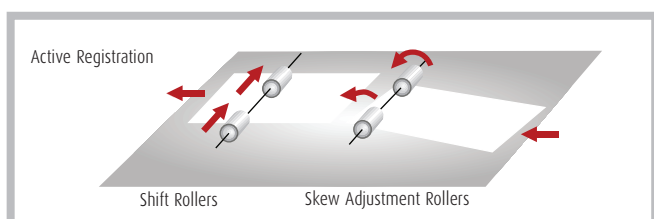
■ TWIN SLEEVE DEVELOPER TO ASSIST IN CONSISTENT AND EQUAL TONER DISTRIBUTION

The developer unit is a twin sleeve design. The twin sleeve design also helps avoid an uneven distribution of toner, allowing a consistent distribution of toner across the page. It's designed to avoid mottling and create fuller solids.



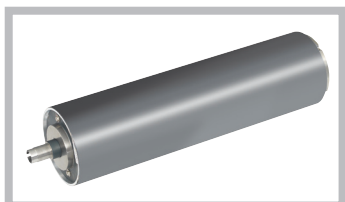
■ EQUIPPED WITH A HIGH-DEFINITION ACTIVE REGISTRATION MECHANISM

The "high-definition registration mechanism" accurately positions printed images on both sides while maintaining a fast paper feed process. Any slight skew in paper position is corrected before the paper is transferred to an accurate feed position. For double-sided printing, sizes of images printed on the reverse side are adjusted in order to compensate for the slight change in paper size which occurs due to heating during image fixation, thus minimising image misalignment between the two sides.



■ AMORPHOUS-SILICON DRUM UNIT

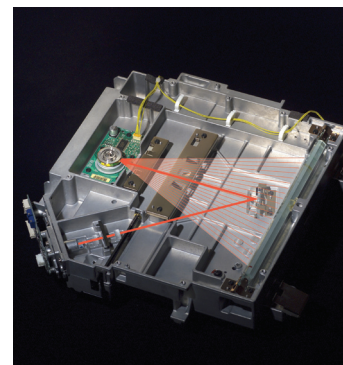
The Canon imagePRESS 1135/1110 digital presses have a long drum life for black and white machines using an Amorphous-Silicon drum that provides high durability. This drum was designed specifically for the Canon imagePRESS 1135/1110 digital presses and the rigid surface enables a longer life and ensures image quality remains at a premium level from its first to the last print. Though a design of layer formulation is not changed from a current a-Si drum for high-end black and white MFP engine, one of the unique topics from a structural point is this drum will be unified with a drum flange part in order to stabilize a drum rotation and to realize an accurate movement through a long drum life.



■ 4 BEAM LASER UNIT TO PRODUCE HIGH ACCURACY IN IMAGE PRODUCTION

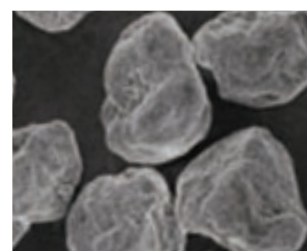
The imagePRESS 1135/1110 series utilize a newly designed 4-beam laser unit for imaging of the A-Si Drum. A smaller laser spot will produce a high 1,200dpi resolution.

The high quality 4-beam laser will be more precise and produce clear and high resolution images. The imaging laser will produce high quality images that will ensure proper shading of images across a page. In addition, by adjusting the tilt of the scanning line, polygon mirror angle, and image magnification will ensure registration is reliable for all types of applications.



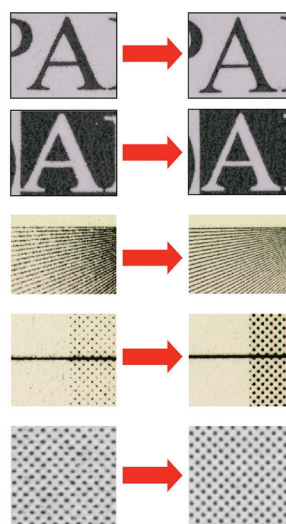
■ NEW EB TONER (EXACT BLACK) - HIGH BLACK DENSITY TONER

Canon newly developed the "eB toner (Exact Black)" for the Canon imagePRESS 1135/1110 digital presses. This newly designed mono-component toner allows a press to reproduce pure and rich black, with robust productivity. This magnetic negative toner particle contains micro dispersed pigments that have an optimal formulation to produce unmixed and perfect black. The "eB toner" also adopts new resin, which improves fusing performance then corresponds to higher productivity of the Canon imagePRESS 1135/1110 digital presses.



■ CANON'S FINE CHARACTER & EDGE TECHNOLOGY (CCET)

As a result of employing Canon's Fine Character & Edge Technology (CCET), character proportion, screen processing, and line width adjustments are all produced for printing clear, crisp text and images.



Character Proportion

Line Width Adjustment

Toner Burst Control

106lpi half tone

PRODUCTIVITY



■ A HIGH-SPEED OUTPUT OF UP TO 135 PAGES A MINUTE

High-speed continuous printing of up to 135 A4* pages a minute enable swift processing of large tasks.

**For imagePRESS 1135.*

Equivalent speeds for imagePRESS 1110 is 110 A4 pages a minute.

■ EQUIPPED WITH DETECTION DEVICE TO CHECK IF PAPERS STICK ONTO EACH OTHER

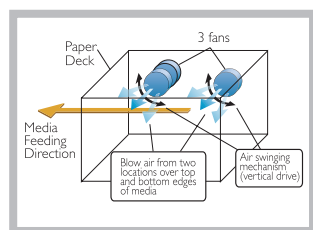
Equipped with a system which detects papers sticking onto each other when transferring sheets from cassettes, POD decks or multi-inserters. A minuscule gap between the sheets of paper is detected by an ultrasonic sensor and the sheets are transferred to an escape tray. The printing process is not interrupted, allowing for a stable paper-feeding process and thus maintaining long-term productivity.



Escape Tray

■ EQUIPPED WITH AIR-POWERED PAPER FEED DEVICES

The cassettes, POD decks and multi-inserters are equipped with air-powered paper sorting devices. Air is blown in between the paper sheets during paper sorting and separation processes in order to prevent the papers from sticking to each other. In addition, a suction-powered feed belt helps achieve a fast and stable paper feed process.



Paper Deck Air Suction Feeding Workflow

■ USER-FRIENDLY, HIGH-VISIBILITY TOUCH-PANEL

Fitted with a bright and clear (10.4-inch) liquid-crystal colour touch screen panel, with functions such as a "system condition screen" which graphically displays the current conditions of the printer or the printing job.



10.4 inch Liquid-Crystal Colour Touch Screen

■ A HIGH-DURABILITY DESIGN FOR STABLE OUTPUT

The main unit has a high-stiffness rectangular column structure, designed for minimal long-term vibration deformation thus considerably increasing its durability. A highly stable quality document production process is ensured while maintaining reliability, even in working environments for professional use.

■ IMPROVED PRODUCTIVITY WITH A LARGE FEED CAPACITY OF UP TO 14,000 SHEETS.

The air-paper-feed cassettes in the main unit have a capacity of 2000 sheets. Up to three POD decks, each with a 4000-sheet capacity, can be fitted, increasing the total feed capacity to 14,000 sheets



Large Feed Capacity

■ MINIMISE DOWNTIME WITH MID-PRINT TONER CHANGE AND PAPER RELOAD EVEN WHEN IN USE

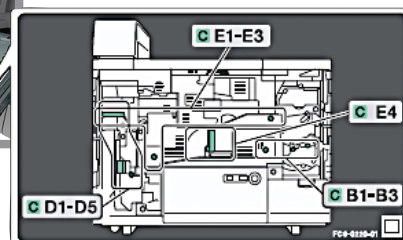
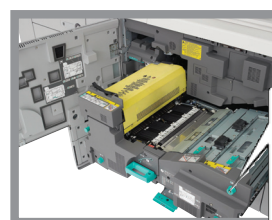
Capable of handling toner change and reloading of paper into an unused cassette deck without interrupting the printing process, thus eliminating downtime.



Toner Change

■ SUPPORTS EASY RECOVERY FROM PAPER JAMS

Smooth and easy recovery from paper jams, aided by easy-to-follow green-colour-coding of relevant handles and jam recovery procedure displayed on the touch screen panel.



Canon's new imagePRESS 1135/1110 digital press has offered the various new technologies. There are three categories that will be the focus for the imagePRESS 1135/1110. These three categories will bring robust benefits for the digital press market customer.

■ QUALITY

- Near lithographic printing
- Class leading excellent image and text quality
- Solid area coverage mottle free
- Precision printing

■ PRODUCTIVITY

- On-the-fly technologies to keep the press running
- High print performance
- Robust In-Line finishing accessories

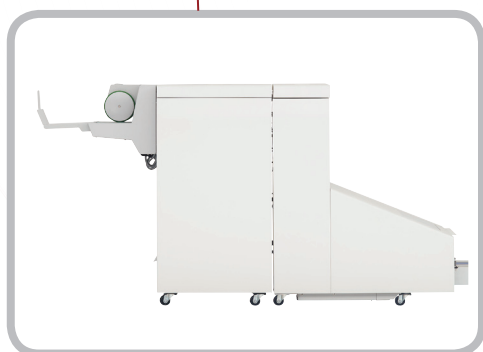
■ VERSATILITY

- Various type, size, and weight media handling
- Exceptional finishing

PERFECT BINDER

Best fit for user such as the publishing or commercial printers to have professionally finished printed materials bounded by durable odourless inline glue binding.

- Up to 200 sheets (400 pages) (75g/m²)
- Easy loading glue pellets
- 3 way inline trimming
- Locking system for uninterrupted binding
- Easy clearance of trimmed waste



BOOKLET TRIMMER

Either a one way or three way saddle stitch inline trimming is available for convenient professional finishing.

- Trimming up to 100 pages (25 sheets) (75g/m²)
- Output via conveyor belt system
- Finished size of full A4 size
- Trimming possible for 300g/m² media



SADDLE / PLAIN FINISHER

A variety of tray finisher available to fit your business and budget, either simplify or full featured finisher is available at your convenience.

- Both AG and AF series performs differently in different configurations
- Inner Trimming is available for Saddle Finisher-AG2
- Inner hole punching and stapling available in all Finishers
- Up to 5,000 sheets output tray
- Half/V folding available in both saddle finisher



PAPER FOLDING UNIT

Long man hours of folding print materials could be reduce by having the Paper Folding Unit. Built to allow 5 different folding methods.

- Folding for both A4 and A3 size
- After folding, hole punching is still possible



HIGH CAPACITY STACKER

For long uninterrupted print productivity, the High Capacity Stacker enables prints stacking up to a massive 20,000 sheets of A4 size prints.

- Unload while you Print
- Jogging function to maintain paper tidiness
- 10,000 sheets per stacker connectivity
- Replaceable dolly for easy maintenance
- Job set collating for easy sorting



PROFESSIONAL PUNCHER

With different requirement of hole punching on different print materials, the Professional Puncher allows inter-changeable hole kit set change easily.

- Up to 9* different types of hole kit set
- Tab paper compatibility
- Waste full detection
- Support for both Coated and Uncoated paper
- Hole punching speed at 135 pages per minute

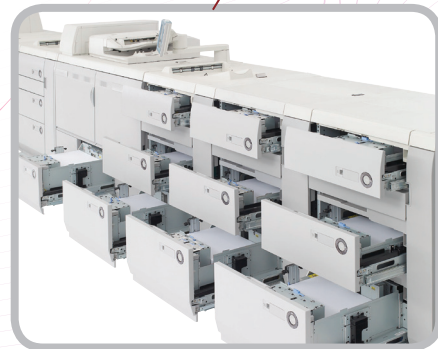
* More hole kit set available upon request



MULTI INSERTION UNIT

Key finishing accessories for job collating with pre-printed color materials, allowing both prints to be bound as a single book.

- Built-in Air Feeding technologies
- Auto tray pickup
- Supports Universal size and full 13" x 19.2" (up to 300g/m²)
- Up to 4,000 sheets of pre-printed materials could be loaded
- Double feeding detection with escape/purging mechanism



PROFESSIONAL PAPER DECK

A massive 14,000 sheets of papers could be loaded in the high productivity Paper Decks, to allow uninterrupted print production.

- Supports Universal size and full 13" x 19.2" (up to 300g/m²)
- Built-in Air Feeding technologies
- Double feeding detection with escape/purging mechanism
- Clear indication of paper capacity with tray locking system
- Humidity control built inside the paper decks to maintain the best paper conditions.

CONNECTIVITY

imagePRESS PRINTER KIT-A1

When connected to the network via an optional print controller, the imagePRESS device is transformed into a digital printer in addition to its standard capabilities.

When the Canon imagePRESS 1135/1110 digital presses are configured with the optional imagePRESS Printer Kit-A1, connected users can access virtually every document/image manipulation feature, paper source and finishing mode available to walk-up copier user's right from their desktop. Plus, it offers a host of other capabilities that are not only available for print jobs, like Secure Print, Print to Mail Box, and Edit and Preview.

The imagePRESS Printer Kit-A1 is the first Canon designed controller that utilizes Adobe®PostScript®3™ software. This Canon-designed controller will enable true 1200 × 1200 dpi print resolution with PostScript and PCL6 drivers with 256-level grayscale support. With PCL5e printing, equivalent 2400 × 600 dpi print resolution is available with 256-level grayscale support.

The imagePRESS Printer Kit supports three page description languages. PCL5e/6 and PostScript 3 are common PDLs used for printing typical office documents.



imagePRESS SERVER J200 / J100

The imagePRESS Server J200/J100 external controller deliver power, performance, and speed to high-end print environments. The products offer extensive variable data printing support and superior workflow management. It produces true 1200 x 1200 dpi print quality, and features true Adobe PS3 print language. The Command WorkStation makes managing demanding workflows easier by centralizing job management. The software automatically identifies the imagePRESS Servers on the network and offers customization options for displaying information. The Compose provides an advanced preview and editing environment. Its wide range of sophisticated document composition tools and advanced WYSIWYG user interface improves document verification, speeds up composition, and enables less experienced operators to perform complex document functions. The imagePRESS Server J200/J100 cater to mission-critical environments such as high-end commercial printers, CRDs, and pre-press businesses.



imagePRESS Server J200 w/Integrated Interface & Stand -A1

	imagePRESS Server J200	imagePRESS Server J100
Base OS	Win XPe	Win XPe
CPU	Core2 Duo E8400	Core Duo T2500
	3.00GHz	2.00GHz
RAM	1GB	1GB
HDD	160GB SATA	80GB SATA
PostScript 3	Y	Y
PCL6	Y	Y
PCL5	Y	Y
Driver's name	● Canon iPR Server-J100-200 Ver1.0 (PS3) ● Canon iPR Server-J100-200 PCL5e (PCL5e) ● Canon iPR Server-J100-200 PCL6 (PCL6)	
Optional Items	● VDP Enablement Kit ● Integrated Interface and Stand Kit (22" monitor) ● Removable Hard Disk (Note: Impose and Compose are standard)	● VDP Enablement Kit ● Integrated Interface and Stand Kit (19" monitor) ● Removable Hard Disk ● VDP Enablement Kit ● EFI Impose ● EFI Compose ● 1GB RAM Upgrade

Mac OS X10.2.8 or earlier will NOT be supported.
Mac OS X10.5 will be supported.

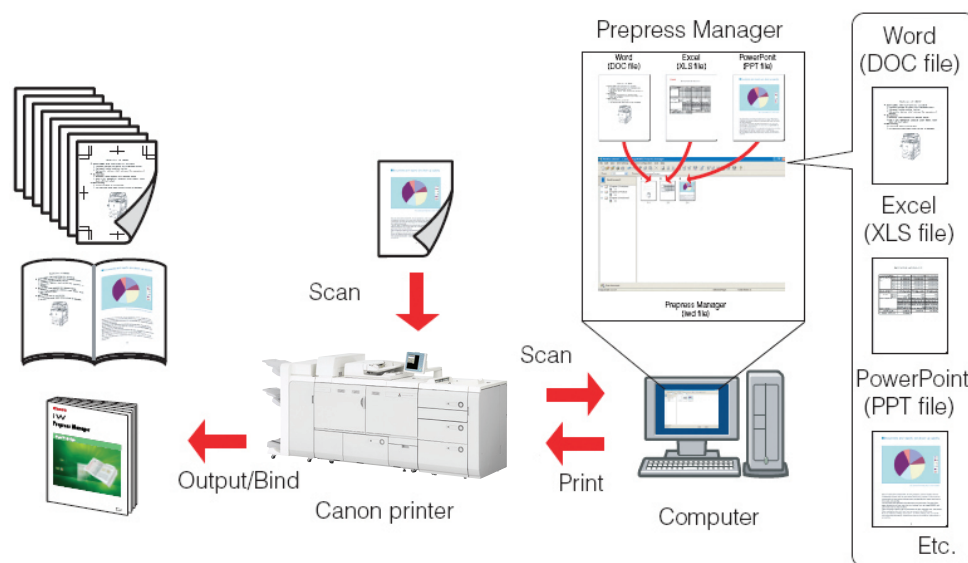
iW PREPRESS MANAGER

MAKEREADY SOLUTION

MakeReady with Simplicity, Streamlining and automating prepress operation for On-Demand Digital Printers all in one go

CANON'S MAKEREADY SOLUTION – HELPS YOU TO SIMPLIFY ALL YOUR MAKEREADY PROCESSES IRRESPECTIVE OF THE ENVIRONMENT AND ENHANCE YOUR PRINTING EFFICIENCY.

iW Prepress Manager (iWPPM) is a fast and flexible tool for creating, editing and publishing documents. Easy to learn and simple to use, enabling common pre-press functions to be performed within a single user interface. It supports various imposition of documents. iW Print Job Manager (iW PJM) adds further print automation and advanced job management capabilities to iWPPM when connected to Canon devices which support JDF.



KEY FEATURES

- Multiple file import and export options
- Supports in-line and off-line finishing
- Hot folders workflow automation
- Supports CIP4 JDF standard
- Annotation editor
- Image editor (scans)
- Content editor (digital)
- Many imposition options

EASY DOCUMENT CREATION

Importing documents into iWPPM is simple – just 'drag-n-drop' the document file icons like scanned pages, graphic files or Microsoft Office documents from Windows.

layout. These include ability to add or move text and images within document; create tabbed dividers with text; and manipulate the scanned content using an integral image editing application.

INNOVATIVE DOCUMENT CREATION FEATURES

Creation of perfect bound document is now a simple and fast process thanks to iWPPM unique spine creation facility.

SUPPORT FOR IN-LINE & OFF-LINE FINISHING

A variety of document imposition options, custom media size selection and flexibility to add Printer's Marks allow work to be prepared for a variety of print devices while also supporting off-line cutting and binding functions.

SUITABLE FOR ALL LEVELS OF USERS

iWPPM can automatically calculate printing and finishing settings for perfect bound and saddle stitched documents, whilst more advanced users can configure these settings manually if required. This enables operators with all levels of experience and print knowledge to use the software with optimal effectiveness.

CONNECTIVITY

Strong scanner and printer connectivity is provided that fully utilizes the advanced function of Canon imagePRESS production system while equipments from other vendors is supported via the CIP4 JDF standard. Document archiving and retrieval is quick and easy with integration to iW Document Manager (iWDM), providing the facility to save and retrieve digital images and documents when required.

POWERFUL EDITING CAPABILITIES

With advanced editing features available, it is possible to perform extensive document content editing whilst preserving its original



imagePRESS 1135/1110 Main Specification

		imagePRESS 1135	imagePRESS 1110
Type		Console type	
Printing method		Electrostatic image transfer	
Resolution		1,200 dpi x 1,200 dpi	
Gradation		256 gradations	
Gammage (g/m ²)	A4 single-sided	135 sheets / minute	110 sheets / minute
Continuous printing speed	A3 single-sided	77 sheets / minute	68 sheets / minute
Paper size		B5 - 330.2mm x 487.7mm (13 x 19.2 inch)	
Maximum printing area		323mm x 482.7mm	
Compatible paper thickness		52-300 g/m ²	
Auto Duplexing Paper Thickness		up to 300 g/m ²	
Paper feed method	Front loading	2000 sheets: 1 level (B5 - 13x19.2inch)	
	POD deck (optional)	4000 sheets: 1000 sheets x 2 levels, 2000 sheets x 1 level (B5 - 13x19.2inch). Up to 3 POD decks may be connected.	
Maximum feed capacity		14,000 sheets	
Power		Single-phase 220V30A+220V15A, 50Hz/60Hz	
Dimensions (width x depth x height)		1,380 x 808 x 1,373mm	

PAPER SUPPLY		
POD Decks (including Secondary)	SPECIFICATIONS	
	Paper Feeding Method	Air Separation Method
	Paper Size	12"x18", 11"x17", 12"x19.2", LGL, A4, A4R, EXEC, EXECL, Custom size: 7-1/8"x7-1/8" to 13"x19-1/4" (182mmx182mm to 330.2mmx487.7mm)
	Capacity	1,000 x 2 + 2,000 sheets (75g/m ²)
	Multiple-feeding Detection	Yes (Built-in)
Side Paper Deck-AF1	Capacity	3 x 2,000 sheets (75g/m ²)
	Multiple-feeding Detection	Optional, requires Paper Detection Unit
	Power Supply	AC220-240V, 5A, 50/60Hz

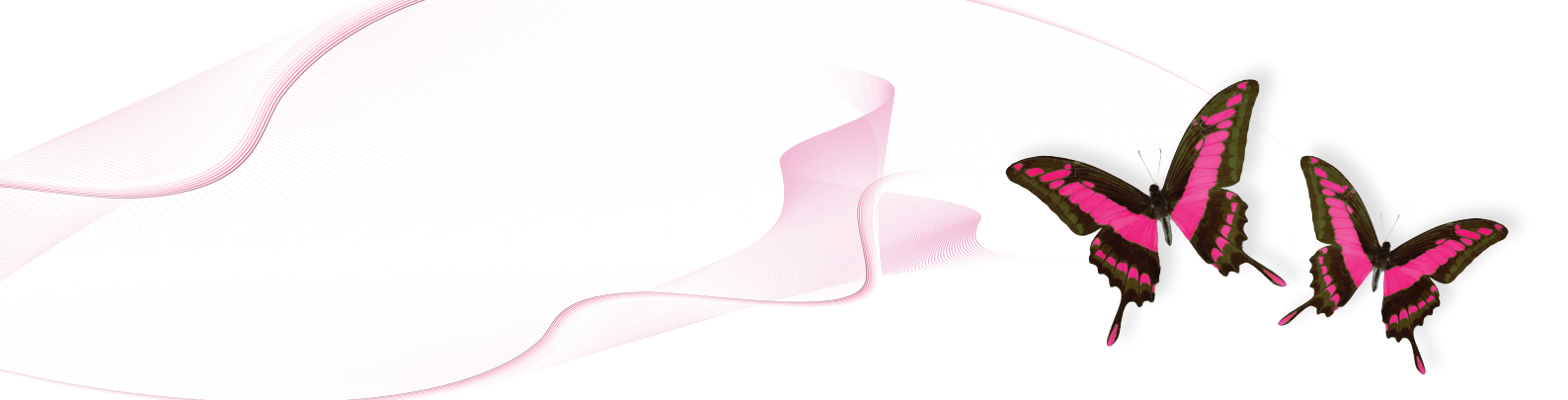
COLOUR IMAGE READER (COPIER MODULE)		
Automatic Document Feeder	SPECIFICATIONS	
	Document Size	B6 - A3, STMTL -11"x17"
	Input Capacity	300 sheets for all size (75g/m ²)
	Document Feeding	One path duplex scan
Color Image Reader	Mixed size	Yes
	Image Sensor	CMOS
	Platen	Fixed
	Acceptable Originals	Sheet, book, 3D object (Up to 2kg)
	Resolution	600 x 600dpi
	Gradations	256 gradation

MULTI-INSERTER		
Multi Drawer Document Unit-A1	SPECIFICATIONS	
	Type	Multi-Insert: Optional
	Paper Feeding Method	Air Separation Insertion Method
	Paper Size	12"x18", 11"x17", 12"x19.2", LGL, A4 A4R, EXEC, EXECL, manual size: 7-1/8"x 7-1/8" to 13"x19-1/4" (182x257mm to 330.2x487.7mm)
	Paper Material	Uncoated Paper: 52 to 300g/m ² Coated Paper: 80 to 240g/m ² , Emboss Paper, Tab Paper, Film Tab Paper kit is needed for Tab Paper (Tab Paper cannot be loaded in upper tray)
	Capacity	1,000 X 2 + 2,000 sheets (75g/m ²) total 4,000
	Escape Tray Capacity	160 sheets (80g/m ²), or less than 5/8" (16mm)
	Paper Sensor	1 level for 75g/m ² & 250 sheets in display
	Power Supply	AC220-240V, 2A, 50/60Hz
	Power Consumption	910W

PAPER FOLDING				
Paper Folding Unit	SPECIFICATIONS			
	Media	Supported paper width	Min	7-1/4" (182mm)
			Max	13" (330.2mm)
		Supported paper length	Min	7-1/4" (182mm)
			Max	19.2" (487.7mm)
		Supported weight	Min	52g/m ²
			Max	300g/m ²
	Power	Power source	spec	Power supplied from Finisher/ Saddle Finisher
				Ave. wattage 150W Max. wattage 200W

PLAIN / SADDLE FINISHER - AF/AG SERIES			
Finisher	SPECIFICATIONS		
	Number of Trays		2
	Tray Capacity	Tray A	3000 Sheets (80g/m ²)
		Tray B	2000 Sheets (80g/m ²)
	Paper Weight		52 to 300g/m ²
Saddle Finisher	Paper Size		LTR/A4R, LGL/B4, 11"x17" / A3, 450x320mm (SRA3), 12"x18" / 305x457mm, 13"x19"
	Staple Position		Corner & Double Stapling
	Maximum Stapling Capacity		Corner & Double Stapling - 100 Sheets (80g/m ²)
	Number of Trays		3
	Tray Capacity	Tray A	3000 Sheets (80g/m ²)
		Tray B	2000 Sheets (80g/m ²)
		Tray C	Unlimited (Lower tray)
	Paper Weight		52 to 300g/m ²
	Paper Size		LTR/A4R, LGL/B4, 11"x17" / A3, 450x320mm (SRA3), 12"x18" / 305x457mm, 13"x19"
	Staple Position		Corner & Double Stapling
	Maximum Stapling Capacity		Corner & Double Stapling - 100 Sheets (80g/m ²)
			Saddle Stitching - 25 Sheets

BOOKLET TRIMMER (1 WAY & 3 WAYS)		
Booklet Trimmer	SPECIFICATIONS	
	Mode	Trim or bypass
	Media size Max size (WxD)	13"x19.2" (330.2x487.7mm), 12"x18", 13"x19.2"(330.2x487.7mm), 11"x17", LGL, A4R
		Min size (WxD) 8-3/8"x11" (210x279.4mm), 12"x18", 13"x19.2"(330.2x487.7mm), 11"x17", LGL, A4R
	Media weight	52 to 300g/m ²
	Type of media	Plain, Coated, Special
	Power supply	Supplying from Saddle Finisher-AF2
	Cutting width (1 way)	One side:2-20mm (0.08" - 0.78")
	Cutting width (3 way)	Top and bottom: 2 to 15mm (0.08" - 0.59") *Minimum finising size from top and bottom is 7-1/2" (190mm)
	Paper waste capacity	About 750 pcs each (15mm cut both top and bottom, A4, 75g/m ²) * "V shape" of a waste is considered as 1pcs of a waste. 750 pcs of waste is equivalent in 1,500 sheets (75g/m ²) of pages of a book. Waste box can hold up to about 750 pcs both top and bottom each (Approx. 1,500 sheets (75g/m ²) as folded book)
	Max capacity of a delivery conveyer	30 books (Book size A4, 40 sheets, 75g/m ²)



HIGH CAPACITY STACKER

High Capacity Stacker			SPECIFICATIONS	
			Tray	Output Tray
Stacking System			Stacker Tray (Flattening and Elevating)	
Stacking Orientation			Stacked in the same way as output from the connected device	
Paper Size	Output Tray	13"x19", 12"x18", 11"x17" LGL, LTR, LTRR, STMTR, 304.8x482.6mm, 320x450mm, 330.2x482.6mm, A3, B4, A4, A4R, A5R, B5, B5R		
	Stack Tray	13"x19", 12"x18", 11"x17", LGL, LTR, LTRR, 320x450mm, 330.2x482.6mm, A3, A4, B4, B5		
Paper Weight			52 to 300g/m ²	
Number of Pin			1	
Mode			Offset stacking for plots	
			Non-offset stacking	
			Stacking onto the output tray	
Stacking Capacity	Output Tray	1000 Sheets (80g/m ²)		
	Stack Tray	5000 sheets (80g/m ²) (A3 size)		
		10000 sheet (80g/m ²) (A4 size)		

PROFESSIONAL PUNCHER

SPECIFICATIONS			
Paper type	Max (WxL)	11-5/8"x8-1/2" (297x216mm)	
	Min (WxL)	11"x8-3/8" (279x210mm)	
	Weight	75 to 216 g/m ² plain paper	
Chip Tray Capacity		25,000 sheets or more of 75g/m ² with four holes	
Die Set	Punch Patterns	A4	3H, 5H, Velo Bind 11H, Plastic Comb 19H, Twin Loop 21H/32H, ProClick 32H, Colour Coil 44H
Paper Size			B5 - 13" x 19.2"

PERFECT BINDER

Product Feature Glue binder using hotmelt on small glue tray, cutter to cut 3-side by rotating booklet

SPECIFICATIONS	
Number of booklet sheets / Mode	Content page: 10-200 sheets (Plain paper) + front sheet : 1 sheet 3-side cut, 1- side cut or no cut (Max. 297mm)
Content size	Vertical and horizontal ratio: 1.25 - 1.5 A4, B5, 9"x12", LTR, EXEC, 8-7/8"x12-9/16" (225x320mm [SRA4]), 8-7/8"x12-1/4" (226x310mm) Recommended size: A4, B5, 9"x12", LTR, EXEC, 8-7/8"x12-9/16" (225x320mm [SRA4]), 8-7/8"x12-1/4" (226x310mm [Extra A4])
Front Size	A3, B4, 13"x19", 12"x18", 11"x17", 12-5/8"x17-11/16" (320x450mm [SRA3])
Paper Weight and number of content sheets (g/m ²)	Thin paper (52-63g/m ²): 30-200 sheets Plain paper (64-80g/m ²): 10-200 sheets Plain paper (81-90g/m ²): 10-150 sheets Thick paper (91-105g/m ²): 10-200 sheets Thick paper (106-163g/m ²): up to 10 sheets as inserted paper
Paper Weight of front sheets (g/m ²)	Accept more than 251g/m ²
Finishing size (after cutting)	Trimming direction 1-side: 6.5-49.5mm (Adjustment =+-0.5mm) 2-side: 6.5-39.5mm (Adjustment =+-0.5mm) Min. 138x203mm - Max. 216x297mm
Combination with content front sheet	Recommended combination A4 finishing: Content sheet = A4/SRA4, Front sheet = SRA4 LTR finishing: Content sheet = 9"x12", Front sheet = SRA4 B5 finishing: Content sheet = A4, Front sheet = A3 A5 finishing: Content sheet = B5, Front sheet = B4
Capacity of glue tray	Approx. 380g (more than 135 sets when binding 100 sheets by A4 (80g/m ²), additional of glue is continuous spec)
Capacity of chip tray	A4 (80g/m ²) -> B5 finishing: 100 sheets x more than 15 sets
Stack number of stack tray	127mm (Max. thickness of booklet: 25mm) or less than 1000 sheets as total papers. More than 9 sets when binding 100 sheets
Power supply	AC220-240V, 50/60Hz, 2.6A
Max power consumption	Less than 623W

WEIGHTS / DIMENSIONS

imagePRESS 1135/1110	WIDTH	DEPTH	HEIGHT	WEIGHT	WIDTH	DEPTH	HEIGHT	WEIGHT
MARKING ENGINE	MM			KG	INCH			Lb.
imagePRESS 1135/1110 Marking Engine	1,380	800	1,040	500	54.3"	31.5"	40.9"	1,101 lb.
POD Deck-C1	745	792	1,095	226	29.3"	31.2"	43.1"	498 lb.
Secondary POD Deck-C1	811	792	1,095	226	31.9"	31.2"	43.1"	498 lb.
Paper Deck-AF1 (MULTI DRAWER)	950	800	1,098	150	37.4"	31.5"	43.2"	330 lb.
Multi Drawer Document Insertion Unit-A1	1,079	792	1,095	251	42.5"	31.2"	43.1"	553 lb.
Document Insertion Unit-F1	701	793	1,397	55	27.6"	31.2"	55.0"	121 lb.
Saddle Finisher-AF2	800	792	1,180	180	31.5"	31.2"	46.5"	396 lb.
Finisher-AF1	800	792	1,180	130	31.5"	31.2"	46.5"	286 lb.
Saddle Finisher-AG2	863	765	1,040	80	34.0"	30.1"	40.9"	176 lb.
Finisher-AG1	749	765	1,040	50	29.5"	30.1"	40.9"	110 lb.
High Capacity Stacker-E1	997	792	1,362	210	39.3"	31.2"	53.6"	463 lb.
Perfect Binder-C1	920	783	1,300	306	36.2"	30.8"	51.2"	674 lb.
Paper Folding Unit-E1	336	793	1,190	65	13.2"	31.2"	46.9"	143 lb.
Booklet Trimmer-D1	1,569	770	1,040	152	61.8"	30.3"	40.9"	335 lb.
Two-Knife Booklet Trimmer-A1	536	770	1,040	145	21.1"	30.3"	40.9"	319 lb.
Professional Puncher-B1	305	800	1,040	80	12.0"	31.5"	40.9"	176 lb.
Professional Puncher Integration Unit-A1	250	792	1,040	40	9.8"	31.2"	40.9"	88 lb.



BEYOND DESCRIPTION

TO THE TOP OF THE NEW FIELD OVER THE "DIGITAL PRINT"

We pledge that we transcend the concept of digital printing and develop new field, guiding your business to success

REGIONAL OFFICE

Canon Singapore Pte Ltd

1 HarbourFront Avenue
#04-01 Keppel Bay Tower
Singapore 098632
Tel: 65-6799 8888
Fax: 65-6799 8882

Indonesia:

PT Samafitro

Jalan Ir. H Juanda No. 8
Jakarta 10120, Indonesia
Tel: 62-21-345 5521
Fax: 62-21-384 4271

Pakistan:

Shirazi Trading Company (Pvt.) Ltd

8th Floor, Adamjee House
I.I Chundrigar Road
Karachi 74000 Pakistan
Tel: 92-21-241 7737
Fax: 92-21-242 0417

DISTRIBUTORS & REPRESENTATIVES OFFICES

Afghanistan

Ishan National Co. Ltd

P.O.Box 559
Opp: Ministry of Justice
Kabul - Afghanistan
Tel: 0093-2-2101727

Malaysia:

Canon Marketing (Malaysia) Sdn Bhd

Block D, Peremba Square
Saujana Resort Section U2,
40150 Shah Alam
Saujana Darul Ehsan, Malaysia
Tel : +603-78446000
Fax : +603-78450505

Sri Lanka:

Metropolitan Office (Pvt.) Ltd

No. 12 Magazine Road
Colombo 8
Sri Lanka
Tel : +94-11-2437797
Fax : +94-11-2685322

Bangladesh:

Flora Limited

Corporate Head Quarters
Adamjee Court Annex-2 (4th Floor)
119-120 Motijheel Commercial Area
Dhaka 1000 Bangladesh
Tel: 880-2-7162742-46
Fax: 880-2-955 0030

Maldives:

SIMDI Company Pvt Ltd

G. Faith, Majeedhee Magu,
20-139, Male,
Republic of Maldives
Tel : +960-324-819
Fax : +960-318-433

Thailand:

Canon Marketing (Thailand) Co. Ltd

10th Floor Bangkok City Tower
179/34-45 South Sathorn Road
Bangkok 10120
Tel: 66-2-344 9999
Fax: 66-2-344 9910

Brunei:

INTERHOUSE COMPANY

No. 5 - 7 Bunut Jaya Complex
Spg 574 Jalan Tutong BF1320
P.O Box 423, Seri Complex
Bandar Seri Begawan BA 1779
Brunei Darussalam
Tel: 673-2 653001
Fax: 673-2 653003

Myanmar:

Accel International Co., Ltd

Level 6, FJV Commercial Centre
No. 422-426, Strand Road
Botahtaung Township,
Yangon Myanmar
Tel : +95-1-202092 ~ 96
Fax : +95-1-202079

Vietnam:

Canon Singapore Pte Ltd

Ho Chi Minh City Representative Office

Unit 437-439-441
Hai Ba Trung Street
Ward 8 District 3, Ho Chi Minh City,
Vietnam
Tel: 848-8200 466
Fax: 848-8200 477

Cambodia:

Royal Cambodia Co., Ltd

#437 Preab Monivong Blvd
Phnom Penh
Kingdom of Cambodia
Tel: 855-23-428955
Fax: 855-23-722961

Nepal:

International Electronics Concern (P) Ltd

Kha 14 1st Floor
Haratibhawan Putalisadak
Ramshah Path Kathmandu Nepal
P.O Box 12588
Tel: 977-1-4421 991
Fax: 977-1-4421 909

Hanoi City Representative Office

15 Nguyen Chi Thanh
Hanoi, Vietnam
Tel: 844-7711 677
Fax: 844-7711 678

India:

Canon India PVT. Ltd

2nd Floor, Tower A&B
Cyber Greens, DLF Phase III
Gurgaon - 122002
Haryana, India
Tel: 91-124-516-0000
Fax: 91-124-516-0011